

Short communication

LEIOMYOMA IN AN UNUSUAL LOCATION IN A COW

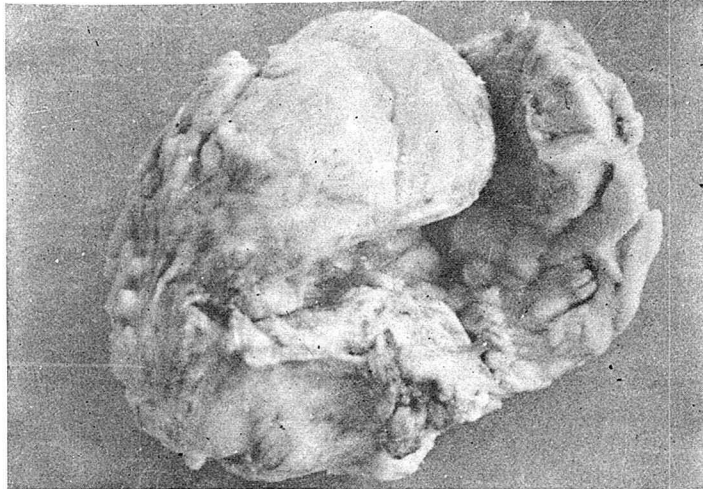


Fig.1 Soft elliptical mass - 10 cm x 6 cm

Carcass of a cow aged about 4 years (No.949) was presented for post mortem at the Centre of Excellence in Pathology. Chronic constipation was the main clinical symptom exhibited by the animal prior to death.

Detailed post mortem examination revealed severe pulmonary congestion and oedema. In order to ascertain the reason for chronic constipation, further detailed examination of the gastro intestinal tract was carried out but no specific lesion could be detected. On incision of the perineal musculature, a soft elliptical mass about 10 cm x 6 cm was seen compressing the wall of the rectum. It was not capsulated, but was easily dissectable from the embedding musculature. The mass was greyish white in colour with cavitation in the centre (Fig.1).

A portion of the tissue was processed for histopathological examination. Microscopical examination of the section revealed, interlacing bundles of neoplastic smooth muscle fibers. The bundles intersected at sharp angles. There was scant to moderate fibrous stroma between the bundles. The cells were strap like and nuclei was characteristically oval to cigar shaped and mitotic figures were scarce. From the gross and histopathological features, the tumour was diagnosed as leiomyoma.

Smooth muscle tumours are rare in cattle (Moulton, 1978). The reported smooth muscle tumours are mainly confined to the reproductive tract, myocardium and lung (Monlux *et al.*, 1976; Maeda *et al.*, 1971 and Lalithakaul *et al.*, 1991). The pressure of the tumour mass on the rectum was identified to be the cause of constipation.

Summary

A case of leiomyoma observed as soft elliptical mass on the underside of the rectum, as embedded in the perianal musculature is reported in a cow. Leiomyoma in such a location in a cow has not been reported earlier and hence this observation is placed on record.

B. Gangadharan, T. Leenadevi, K.V. Valsala and K.M. Ramachandran,
Centre of Excellence in Pathology,
College of Veterinary and Animal Sciences,
Mannuthy, Thrissur, Kerala 680651

References

- Lalitha, K., Kavani, F.S. and D.M. Tatkod (1991). A case of leiomyoma in a cow. *Indian J. Vet. Pathol.* **15**(2): 117-117.
- Maeda, T., Haysahi, T., Susuki, T. and Tsumara, I. (1971). Tumours of genetic organs in domestic animals I - Uterine and vaginal tumours in cows and a sow. *J. Jap. Vet. Med. Asso.* **24**: 226-231.
- Monlux, A.W., Anderson, W.A. and C.L. Davis (1956). A survey of tumours occurring in cattle, sheep and swine. *Amer. J. Vet. Res.* **17**: 646-677.
- Moulton, J.E. (1978). Tumours in domestic animals 2nd Ed. University of California Press. pp.75-80.