



# Occurrence of *Klebsiella pneumoniae* and *Salmonella* spp. in environmental samples

 P. T. Swetha<sup>1\*</sup>,  Binsy Mathew<sup>2</sup>,  C. Latha<sup>3</sup> and  C. Sethulekshmi<sup>2</sup>

Department of Veterinary Public Health,  
College of Veterinary and Animal Sciences, Mannuthy, Thrissur-680651,  
Kerala Veterinary and Animal Sciences University, Pookode, Wayanad, India.

Citation: Swetha, P.T., Binsy, M., Latha, C., and Sethulekshmi, C. 2022. Occurrence of *Klebsiella pneumoniae* and *Salmonella* spp. in environmental samples. *J. Vet. Anim. Sci.* **53**(1): 55-59.

DOI: <https://doi.org/10.51966/jvas.2022.53.1.55-59>

Received: 22.04.2021

Accepted: 08.06.2021

Published: 31.03.2022

## Abstract

The present study was undertaken for the isolation and identification of *Klebsiella pneumoniae* and *Salmonella* spp. from environmental samples. A total of 120 soil and 120 water samples were collected from ponds and rivers in Thrissur. The samples were subjected to conventional culture techniques and *K. pneumoniae* and *Salmonella* spp. isolates were detected in 57.50 and 14.58 per cent samples, respectively. There were no significant differences between the occurrence of *K. pneumoniae* and *Salmonella* spp. in different soil and water samples, ( $p \geq 0.05$ ). The isolates were subjected to molecular confirmation targeting *rpoB* gene for *K. pneumoniae* and *invA* gene for *Salmonella* spp. Out of the 138 *K. pneumoniae* and 35 *Salmonella* spp. isolates analysed, 86.96 and 97.14 per cent isolates were found positive on PCR. The results of the study revealed that environment acts as an important reservoir of *K. pneumoniae* and *Salmonella* spp.

**Keywords:** *Klebsiella pneumoniae*, *Salmonella* spp., environment, water

Gram negative bacterial infections are highly significant public health concern worldwide. Among the Gram negative bacterial agents, *K. pneumoniae* and *Salmonella* spp. are important in terms of virulence and pathogenicity. These bacteria are often detected in the environment from which they enter the human body directly and through contamination of food materials. *Klebsiella pneumoniae* is an opportunistic pathogen and causes several types of infections in humans, including respiratory tract, urinary tract and bloodstream infections. These infections usually occur but are not limited to hospitalised or immunocompromised patients. The pneumonia caused by *Klebsiella* spp. causes mortality in as high as 50 per cent of the patients (He *et al.*, 2016). In addition, they have an ability to adhere to the surfaces of urinary catheters and ventilators, forming biofilms causing catheter-associated urinary tract infections and ventilator-associated pneumonia, making it the common cause of death in patients admitted to intensive care units. The bacteria are main agents in the transmission and maintenance of antimicrobial resistance (AMR). The species

1\*. MVSc Scholar, Department of Veterinary Public Health and corresponding author: email: [swethamohandas007@gmail.com](mailto:swethamohandas007@gmail.com), Ph: 8547420648

2. Assistant Professors, Department of Veterinary Public Health

3. Professor and Head, Department of Veterinary Public Health

Copyright: © 2022 Swetha *et al.* This is an open access article distributed under the terms of the Creative Commons Attribution 4.0 International License (<http://creativecommons.org/licenses/by/4.0/>), which permits unrestricted use, distribution, and reproduction in any medium, provided the original author and source are credited.

**Table 1.** Primers used for PCR

Genes	Primer	Primer sequence	Size (bp)	Reference
<i>rpoB</i>	F R	5'CAACGGTGTGGTTACTGACG 3' 5'TCTACGAAGTGGCCGTTTTTC 3'	108	Bobbadi <i>et al.</i> (2020)
<i>invA</i>	F R	5'ATCTCCGTTGCACTCTTTGC 3' 5'ACCATCATCATCATCGTCCA 3'	244	Amini <i>et al.</i> (2010)

**Table 2.** Thermal cycling conditions for amplification

Steps	<i>rpoB</i> gene	<i>invA</i> gene	
Initial denaturation	95°C; 5 min	94°C ;1 min	
Denaturation	95°C;1 min	35 cycles	
Annealing	55°C; 1 min		94°C; 30 sec
Extension	72°C ;2 min		60°C ; 30 sec
Final extension	72°C ;10 min	72°C; 2 min	
Hold	4°C; 10 min	72°C; 10 min	
		4°C; 10 min	

**Table 3.** Occurrence of *K. pneumoniae* in water and soil samples

Sl. No.	Source	Samples Analysed	Positive Samples		Chi- square	p-value
			Number	Per cent		
1.	Pond Water	60	42	70.00	0.463 <sup>ns</sup>	0.496
2.	Pond Soil	60	37	61.67		
3.	River Water	60	33	55.00	0.866 <sup>ns</sup>	0.352
4.	River Soil	60	26	43.33		
<b>Total</b>		<b>240</b>	<b>138</b>	<b>57.50</b>		

p < 0.05 – significant, ns - Non significant

**Table 4.** Occurrence of *Salmonella* spp. in water and soil samples

Sl. No.	Sample	Samples Analysed	Positive Samples		Chi- square	p-value
			Number	Per cent		
1.	Pond Water	60	10	16.67	3.718 <sup>ns</sup>	0.054
2.	Pond Soil	60	6	10.00		
3.	River Water	60	10	16.67	3.765 <sup>ns</sup>	0.052
4.	River Soil	60	9	15.00		
<b>Total</b>		<b>240</b>	<b>35</b>	<b>14.58</b>		

p < 0.05 – significant, ns - Non significant

*K. pneumoniae* is again constituted by three different subspecies; *K. pneumoniae* subsp. *pneumoniae*, *K. pneumoniae* subsp. *ozaenae* and *K. pneumoniae* subsp. *Rhinoscleromatis* (Ko *et al.*, 2002).

Genus *Salmonella* is composed of two separate species; *S. bongori* and *S. enterica* and encompasses over 2500 known serotypes, all of which are considered to have the potential to cause diseases in humans. *Salmonella* spp. shows different types of disease manifestations in human *viz.*, enteric fever, gastroenteritis, bacteraemia and other

extra intestinal complications and chronic carrier state. *Salmonella* is responsible for 93.8 million cases of gastroenteritis worldwide annually with 1,55,000 deaths (Grimont and Weill, 2007). Considering the gravity of the infections caused by these bacteria, the present study was carried out to study the occurrence of *K. pneumoniae* and *Salmonella* spp. in environmental samples.

#### Materials and methods

A total of 120 water samples were collected from Thrissur district, which included

pond water samples (60) and river water samples (60). From the respective pond sides and river banks, 60 soil samples each were also collected. The samples were collected during a span of 10 months, from September 2019 to July 2020. Sampling was performed across the three river basins in Thrissur district viz., Chalakkudy, Karuvannur and Kechery.

Approximately 250 mL water sample and 100g soil sample each were collected from each sampling site in sterile containers. The samples were then transported and processed in the Quality Control Laboratory, Department of Veterinary Public Health, College of Veterinary and Animal Sciences, Mannuthy. All the samples were subjected to isolation and identification of *K. pneumoniae* (Kumar *et al.*, 2013) and *Salmonella* spp. (APHA, 2012) by conventional culture techniques with some modifications.

For isolation of *K. pneumoniae*, samples were enriched on nutrient broth (NB). Five grams of soil sample was transferred to 45 mL NB, which was incubated at 37°C for 24 h. In case of water samples, five millilitres of each sample was transferred to 45 mL NB. This was followed by selective plating onto MacConkey agar (MCA) and incubation at 37°C for 24 h. Characteristic large, pink mucoid colonies were selected and further confirmed by biochemical tests (Fig. 1). For isolation of *Salmonella* spp., the samples were enriched on tetrathionate (TT) broth, followed by selective plating on Xylose Lysine Deoxycholate (XLD) agar and incubated at 37°C for 24 h. Characteristic red colonies with black centres were selected and

later confirmed by biochemical tests (Fig. 2). The significance of occurrence of *K. pneumoniae* and *Salmonella* spp. among different sources was analysed using chi-square test with the help of IBM – SPSS version 24.0.

The isolates were further subjected to molecular confirmation by polymerase chain reaction (PCR) targeting *rpoB* gene for *K. pneumoniae* (Bobbadi *et al.*, 2020) and *invA* gene for *Salmonella* spp. (Amini *et al.*, 2010). The primer sequences and cyclical conditions of the genes are mentioned in Table 1 and Table 2.

## Results and discussion

Out of the 240 samples analysed, 138 (57.50 per cent) were found positive for *K. pneumoniae* by conventional culture techniques (Fig. 1). Of this, 54.35 per cent were from water samples and the rest 45.65 per cent were isolated from soil samples. On statistical analysis, there was no significant difference ( $p \geq 0.05$ ) between the occurrence of *K. pneumoniae* in different water and soil samples (Table 3). Similar results were obtained in studies conducted by Podschun *et al.* (2001) in Germany and Tafoukt *et al.* (2017) in Algeria.

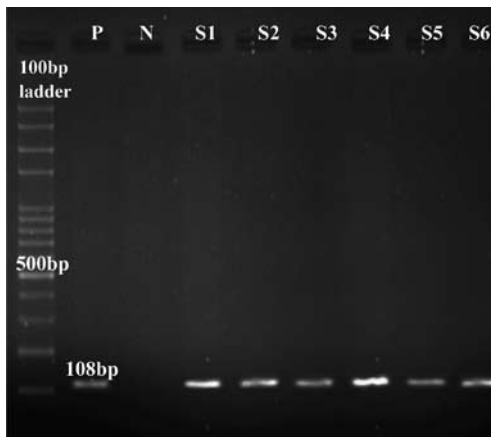
In case of *Salmonella* spp., 35 out of the 240 samples analysed (14.58 per cent) were found positive (Fig. 2). Of this, water samples and soil samples constituted 57.14 per cent and 42.86 per cent, respectively. There was no significant difference ( $p \geq 0.05$ ) between the occurrences of *Salmonella* spp. in different water and soil samples (Table 4). In a study



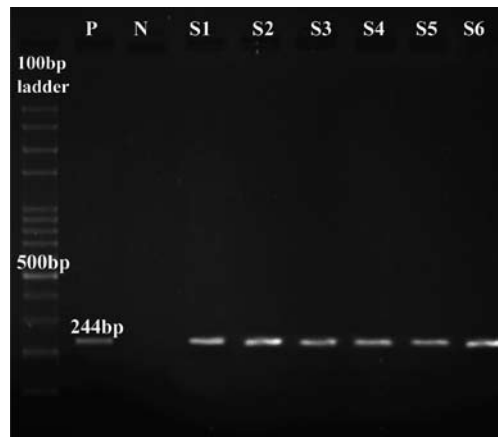
Fig. 1. *Klebsiella pneumoniae* on MCA



Fig. 2. *Salmonella* spp. on XLD Agar



**Fig. 3.** Identification of *rpoB* gene. P- Positive Control N- Negative Control S1, S2, S3, S4, S5, S6- Samples



**Fig. 4.** Amplification of *invA* gene. P- Positive Control. N- Negative Control. S1, S2, S3, S4, S5, S6- Samples

conducted by Keelara *et al.* (2013) in USA, 11.7 per cent of environmental samples were found to be positive for *Salmonella* spp., which accorded with the present study.

The isolates were then subjected to PCR for molecular confirmation. To confirm *K. pneumoniae* isolates, the house keeping gene *rpoB* was used. He *et al.* (2016) reported this gene to be a suitable PCR target for species level differentiation of *K. pneumoniae*. Of the 138 *K. pneumoniae* isolates identified by culture techniques, 120 isolates (86.96 per cent) were found positive (Fig. 3) by PCR. In a study conducted by Bobbadi *et al.* (2020) in Andhra Pradesh, 90 per cent of *K. pneumoniae* isolates were confirmed by PCR targeting *rpoB* gene.

To confirm *Salmonella* spp. isolates, conserved virulence gene *invA* was used. Of the 35 isolates identified as *Salmonella* spp. by conventional culture techniques, 34 (97.14 per cent) generated amplicons specific for *invA* (Fig. 4). Chaudhary *et al.* (2015) from Ahmedabad analysed different environmental samples for the presence of *invA* and concluded that it was the major gene coding for the virulence of *Salmonella* spp.

The results of the present study show that environment could be a potent source of *K. pneumoniae* and *Salmonella* spp. The pathogens gain entry to the human body directly,

causing infections in susceptible patients. In addition, pond and river water are routinely used for the irrigation of agricultural fields, paving way for the contamination of fresh produce by the bacteria. There is also high chance of acquisition of resistant infections as more often than not, these bacteria may contain resistance genes, making the infections untreatable with many of the routine antibiotics.

### Conclusion

The present study demonstrated that antibiotic resistant *K. pneumoniae* and *Salmonella* spp. are present in the environment in abundance. A coordinated One Health approach is required at local and national level taking into account the role of environment in antibiotic resistance transmission, so that appropriate control measures can be put in place to limit the emergence and spread of AMR. This entails an integrated approach of surveillance at human, animal and environmental systems which should be coupled with awareness and education of public and professionals to contain global resistance load.

### Acknowledgement

The authors are thankful to the Kerala Veterinary and Animal Sciences University for providing the facilities needed for carrying out the research.

### Conflict of interest

The authors declare that they have no conflict of interest.

### References

- Amini, K., Salehi, T.Z., Nikbakht, G., Ranjbar, R., Amini, J. and Ashrafganjooei, S.B. 2010. Molecular detection of *invA* and *spv* virulence genes in *Salmonella* enteritidis isolated from human and animals in Iran. *Afr. J. Microbiol. Res.* **4**: 2202-2210.
- APHA [American Public Health Association]. 2012. *Standard methods for the examination of water and waste water*. (22<sup>nd</sup> Ed.). American Public Health Association, Washington. 1325p.
- Bobbadi, S., Kiranmayi Chinnam, B., Nelapati, S., Tumati, S.R., Kandhan, S., Gottapu, C. and Boddu, S.V. 2020. Occurrence and genetic diversity of ESBL producing *Klebsiella* species isolated from livestock and livestock products. *J. Food Safety.* **40**: 127-138.
- Chaudhary, J.H., Nayak, J.B., Brahmabhatt, M.N. and Makwana, P.P. 2015. Virulence genes detection of *Salmonella* serovars isolated from pork and slaughterhouse environment in Ahmedabad, Gujarat. *Vet. Wild.* **8**: 121-132.
- He, Y., Guo, X., Xiang, S., Li, J., Li, X., Xiang, H., He, J., Chen, D. and Chen, J. 2016. Comparative analyses of phenotypic methods and 16S rRNA, *khe*, *rpoB* genes sequencing for identification of clinical isolates of *Klebsiella pneumoniae*. *Antonie Van Leeuwenhoek.* **109**: 1029-1040.
- Grimont, P.A. and Weill, F.X., 2007. Antigenic formulae of the *Salmonella* serovars. *WHO collaborating centre for reference and research on Salmonella*, **9**, pp.1-166.
- He, Y., Guo, X., Xiang, S., Li, J., Li, X., Xiang, H., He, J., Chen, D. and Chen, J. 2016. Comparative analyses of phenotypic methods and 16S rRNA, *khe*, *rpoB* genes sequencing for identification of clinical isolates of *Klebsiella pneumoniae*. *Antonie Van Leeuwenhoek.* **109**: 1029-1040.
- Keelara, S., Scott, H.M., Morrow, W.M., Gebreyes, W.A., Correa, M., Nayak, R., Stefanova, R. and Thakur, S. 2013. Longitudinal study of distributions of similar antimicrobial-resistant *Salmonella* serovars in pigs and their environment in two distinct swine production systems. *Appl. Environ. Microbiol.* **79**: 5167-5178.
- Ko, W.C., Paterson, D.L., Sagnimeni, A.J., Hansen, D.S., Von Gottberg, A., Mohapatra, S., Casellas, J.M., Goossens, H., Mulazimoglu, L., Trenholme, G. and Klugman, K.P. 2002. Community-acquired *Klebsiella pneumoniae* bacteremia: global differences in clinical patterns. *Emerg. Infect. Dis.* **8**: 160-169.
- Kumar, D., Shrutikirti, A. and Kumari, K. 2013. *Klebsiella*: In drinking water. *Int. J. Pharm. Sci. Invent.* **12**: 38-42.
- Podschun, R., Pietsch, S., Höller, C. and Ullmann, U. 2001. Incidence of *Klebsiella* species in surface waters and their expression of virulence factors. *Appl. Environ. Microbiol.* **67**: 3325-3327.
- Tafoukt, R., Touati, A., Leangapichart, T., Bakour, S. and Rolain, J.M. 2017. Characterization of OXA-48-like-producing Enterobacteriaceae isolated from river water in Algeria. *Wat. Res.* **120**: 185-189. ■